

**Theme 1 Children, Young People and Families**

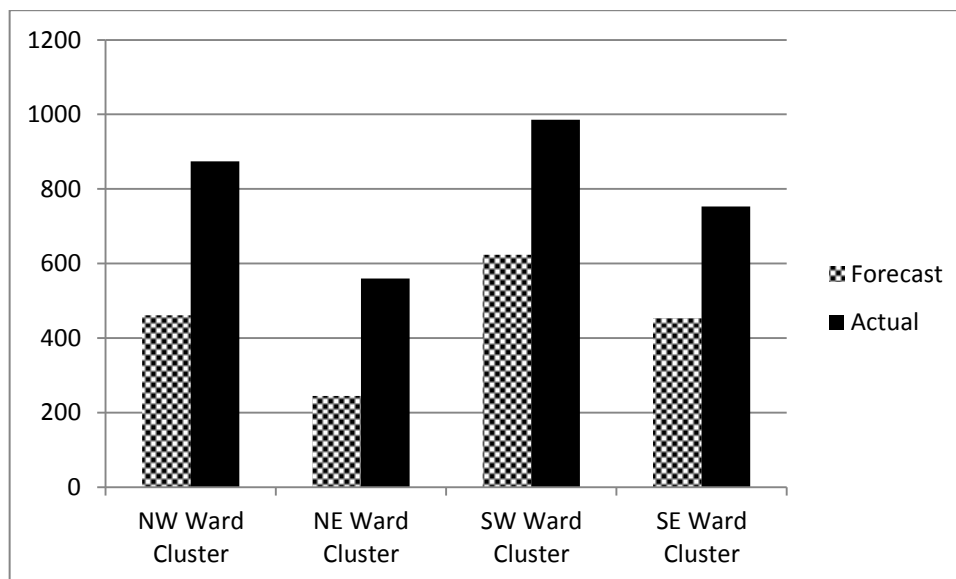
**MSG Programme Period 11 (Apr-Jun 2018) Performance Report**

**Theme 1 – Children, Young People & Families:** This theme focuses on seeking the following key outcomes:

- Improved levels of participation, educational attainment and progression for children and young people.
- Children and young people are protected from harm and families are supported to provide a safe environment.
- Harmful relationships among peer/gender groups are reduced.
- Improved physical (such as reduced levels of obesity) and emotional health and wellbeing in children and young people.
- Reduced levels of substance misuse and sexual abuse, violent crime (including domestic violence) and anti-social behaviour.

**Geographical Breakdown**

The table below shows the number of beneficiaries supported during the period April to June 2018 by Ward Cluster:



NW Ward Cluster	NE Ward Cluster	SW Ward Cluster	SE Ward Cluster
<ul style="list-style-type: none"> <li>• Bethnal Green</li> <li>• Spitalfields &amp; Banglatown</li> <li>• St Peter's</li> <li>• Weavers</li> </ul>	<ul style="list-style-type: none"> <li>• Bow East</li> <li>• Bow West</li> <li>• Bromley North</li> <li>• Bromley South</li> <li>• Mile End</li> </ul>	<ul style="list-style-type: none"> <li>• Shadwell</li> <li>• St Dunstons</li> <li>• St Katherine's &amp; Wapping</li> <li>• Stepney Green</li> <li>• Whitechapel</li> </ul>	<ul style="list-style-type: none"> <li>• Blackwall &amp; Cubitt Town</li> <li>• Canary Wharf</li> <li>• Island Gardens</li> <li>• Lansbury</li> <li>• Limehouse</li> <li>• Poplar</li> </ul>

**Raising Attainment Project Portfolio – Children’s Services**

No. of live projects – Apr-Jun 2018	No. of projects classed as <b>GREEN</b>	No. of projects classed as <b>AMBER</b>	No. of projects classed as <b>RED</b>
9	9	0	0

There are 9 projects in this category; all are classed as ‘Green’ and meeting the agreed expenditure targets, service outputs and outcomes as indicated in monitoring reports and case studies received. All projects are working closely with schools and parents to provide reciprocal feedback on their young students. Officers will continue to work with organisations to ensure quality driven provision.

**Vulnerable & Excluded Families Project Portfolio – Children’s Services**

No. of live projects – Apr-Jun 2018	No. of projects classed as <b>GREEN</b>	No. of projects classed as <b>AMBER</b>	No. of projects classed as <b>RED</b>
6	5	0	1

There are 6 projects in this category; 5 are classed as ‘Green’ and are on course to meet the agreed expenditure targets, service outputs and outcomes as indicated in monitoring reports received.

1 project classed as RED:

**Family Action – Tower Hamlets Young Carers Support Support Service**

No progress on premises issues since the last Performance Report has led to the project classed as Red.

**Community Languages Project Portfolio – Children’s Services**

No. of live projects – Apr-Jun 2018	No. of projects classed as <b>GREEN</b>	No. of projects classed as <b>AMBER</b>	No. of projects classed as <b>RED</b>
10	10	0	0

There are 10 projects in this category; all of which are classed as ‘Green’ and are on course to meet the agreed expenditure targets, service outputs and outcomes as indicated in monitoring reports received.

**Youth Services Project Portfolio – Children’s Services**

No. of live projects – Apr-Jun 2018	No. of projects classed as <b>GREEN</b>	No. of projects classed as <b>AMBER</b>	No. of projects classed as <b>RED</b>
16	15	0	0

There are 16 projects in this category; all of which are classed as ‘Green’ and are on course to meet the agreed expenditure targets, service outputs and outcomes as indicated in monitoring reports received.

**Sports Project Portfolio – Children’s Services**

No. of live projects – Apr-Jun 2018	No. of projects classed as <b>GREEN</b>	No. of projects classed as <b>AMBER</b>	No. of projects classed as <b>RED</b>
6	4	0	2

There are 6 active projects in this category; 4 of which are classed as ‘Green’ and are on course to meet the agreed expenditure targets, service outputs and outcomes as indicated in monitoring reports received.

2 projects are classed as Red:

**Tower Hamlets Youth Sports Foundation – Hub Club Programme**

THYSF have met all obligations in respect of MSG performance for period 11.

The council is presently liaising with THYSF to obtain any remaining premises agreements not yet supplied to council to enable officers to provide a comprehensive report on all premises agreements THYSF have supplied. This will inform a recommendation on whether all grant conditions (including premises) have been met by THYSF and whether payments can therefore be made.

**Tower Hamlets Youth Sports Foundation – Stepping Stones Programme**

THYSF have met all obligations in respect of MSG performance for period 11.

The council is presently liaising with THYSF to obtain any remaining premises agreements not yet supplied to council to enable officers to provide a comprehensive report on all premises agreements THYSF have supplied. This will inform a recommendation on whether all grant conditions (including premises) have been met by THYSF and whether payments can therefore be made.

**Culture Project Portfolio – Children’s Services**

No. of live projects – Apr-Jun 2018	No. of projects classed as <b>GREEN</b>	No. of projects classed as <b>AMBER</b>	No. of projects classed as <b>RED</b>
8	8	0	0

There are 8 active projects in this category; all are classed as ‘Green’ and are on course to meet the agreed expenditure targets, service outputs and outcomes as indicated in monitoring reports received.